

Captive-Joiner SNAP-LINE

The Captive-Joiner offers all the benefits of traditional captive screws PLUS improved ease of use by the end-user, and reduction in the risk of damage to sensitive electronic equipment housed inside the enclosure.

Features & Benefits of the Captive-Joiner include:

- Single component design which combines the function of the captive screw and the captive nut/cagenut.
- Fits the standard cut-out of 19" racks - 9.5 mm x 9.5 mm.
- Reduced installation costs - only one component to install in just seconds with a simple snap-in design.
- Only one component to inventory which reduces the number of SKUs.
- Snap-in design eliminates the need to invest in the machinery to install a captive screw and captive nut/cagenut.
- Secure attachment to the panel eliminates the possibility of the Captive-Joiner falling out under extreme vibration conditions.
- Designed for ease of use by the end-user - disengaging the two panels is achieved by turning the knob 45°.
- Designed for ease of use by the end-user - product can be completely removed from both panels and reinstalled quickly on-site with a simple push.
- Compensates for applications where tight tolerances are difficult to achieve.
- Knob design eliminates the need for a separate handle.
- Available in tool (NEBS) or hand operated versions.

The Captive-Joiner incorporates D•SNAP Technology making installation into the panel quick and easy...the product is installed in just seconds. This tool-less installation method allows the Captive-Joiner to be quickly and easily installed into the panel without tools, hardware or additional machinery. (See operation diagram below.)



Install:

Image 1: The Captive-Joiner is pushed into the front panel (e.g. 19" drawer, cover panel). The riveted leaf spring widens to prevent the Captive-Joiner from falling out of the panel. This keeps it secure and makes it captive. The cut-out can be made larger to allow for tolerance adjustment.

Image 2: The Captive-Joiner, pre-assembled in the front panel, is inserted into the cut-out of the rear panel (**Image 3**) and kept in position by the D•SNAP wedges. This ensures alignment of the two panels.

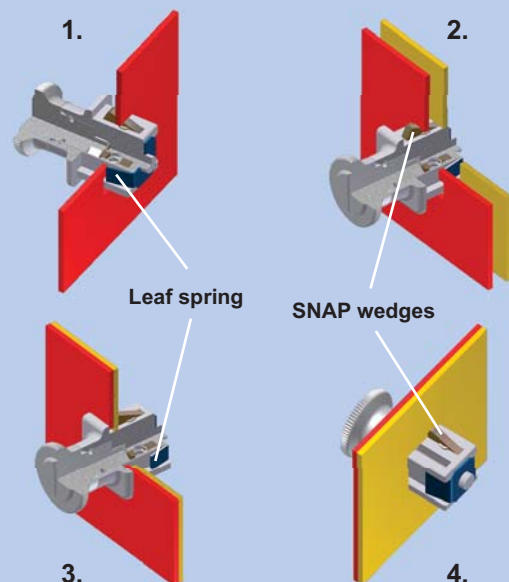
Images 3 and 4: Full insertion of the Captive-Joiner into the second panel securely joins the two panels for a vibration-proof connection.

Disengage Panels:

1. By turning the insert (Turning Knob or Screwdriver) the snap-wedges are pulled backwards and the front panel can be disengaged from the back panel.
2. The Captive-Joiner is held in position and remains held in the front panel by the leaf spring.

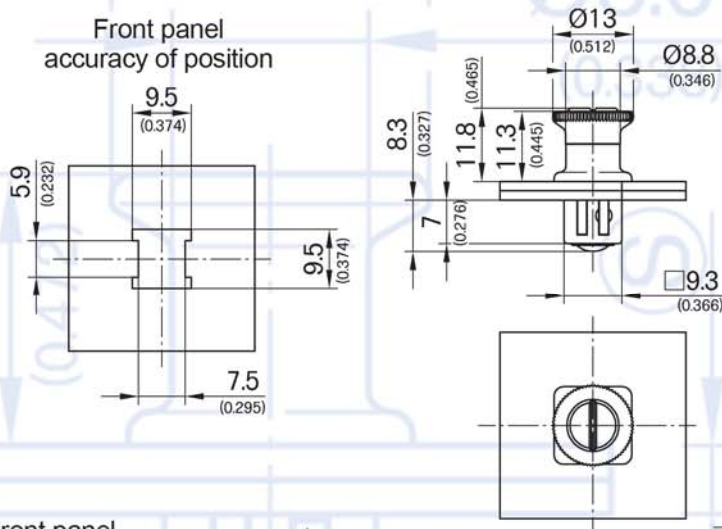
Applications which require more than one Captive-Joiner:

In applications using more than one Captive-Joiner, the Captive-Joiners can be pre-released, one-by-one, by turning the insert (Turning Knob or Screwdriver) and pulling the Captive-Joiner until the leaf spring touches the front panel. When all the Captive-Joiners have been pre-released, the front panel can be removed from the back panel. The Captive-Joiners stay assembled and held in the front panel by the leaf spring.

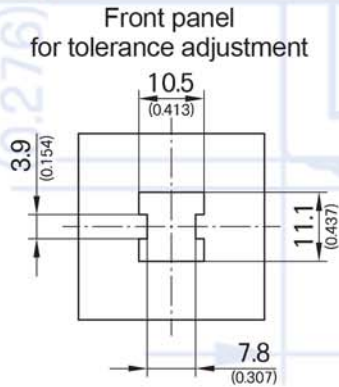


Captive-Joiner SNAP-LINE

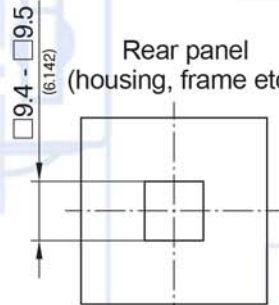
Front panel
accuracy of position



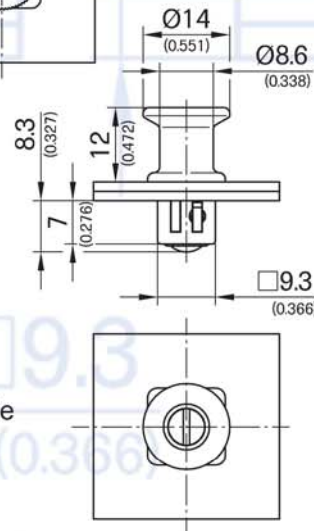
Front panel
for tolerance adjustment



Rear panel
(housing, frame etc.)



also possible as oblong hole
for tolerance adjustment



Large measurements represent millimeters (mm).
Small measurements in parentheses represent inches (in).

Material - Zinc die

Numbers below represent Part Numbers for clamping range, headstyle and material finish.

Operation through Slotted Insert

clamping range mm (in) (S)	glossy chrome plated	matte chrome plated	black E-COATED
1.5 - 2.2 (0.059 - 0.087)	294-9201.00-00020	294-9202.00-00020	294-9203.00-00020
2.3 - 2.8 (0.091 - 0.110)	294-9201.00-00025	294-9202.00-00025	294-9203.00-00025
2.9 - 3.4 (0.114 - 0.134)	294-9201.00-00030	294-9202.00-00030	294-9203.00-00030
3.5 - 4.0 (0.138 - 0.157)	294-9201.00-00038	294-9202.00-00038	294-9203.00-00038
4.1 - 4.6 (0.161 - 0.181)	294-9201.00-00045	294-9202.00-00045	294-9203.00-00045
4.7 - 5.2 (0.185 - 0.203)	294-9201.00-00050	294-9202.00-00050	294-9203.00-00050

Operation through Turning Knob

clamping range mm (in) (S)	glossy chrome plated	matte chrome plated	black E-COATED
1.5 - 2.2 (0.059 - 0.087)	294-9204.00-00020	294-9205.00-00020	294-9206.00-00020
2.3 - 2.8 (0.091 - 0.110)	294-9204.00-00025	294-9205.00-00025	294-9206.00-00025
2.9 - 3.4 (0.114 - 0.134)	294-9204.00-00030	294-9205.00-00030	294-9206.00-00030
3.5 - 4.0 (0.138 - 0.157)	294-9204.00-00038	294-9205.00-00038	294-9206.00-00038
4.1 - 4.6 (0.161 - 0.181)	294-9204.00-00045	294-9205.00-00045	294-9206.00-00045
4.7 - 5.2 (0.185 - 0.203)	294-9204.00-00050	294-9205.00-00050	294-9206.00-00050

We reserve the right to make technical alterations. We do not accept any responsibility for printing errors.